



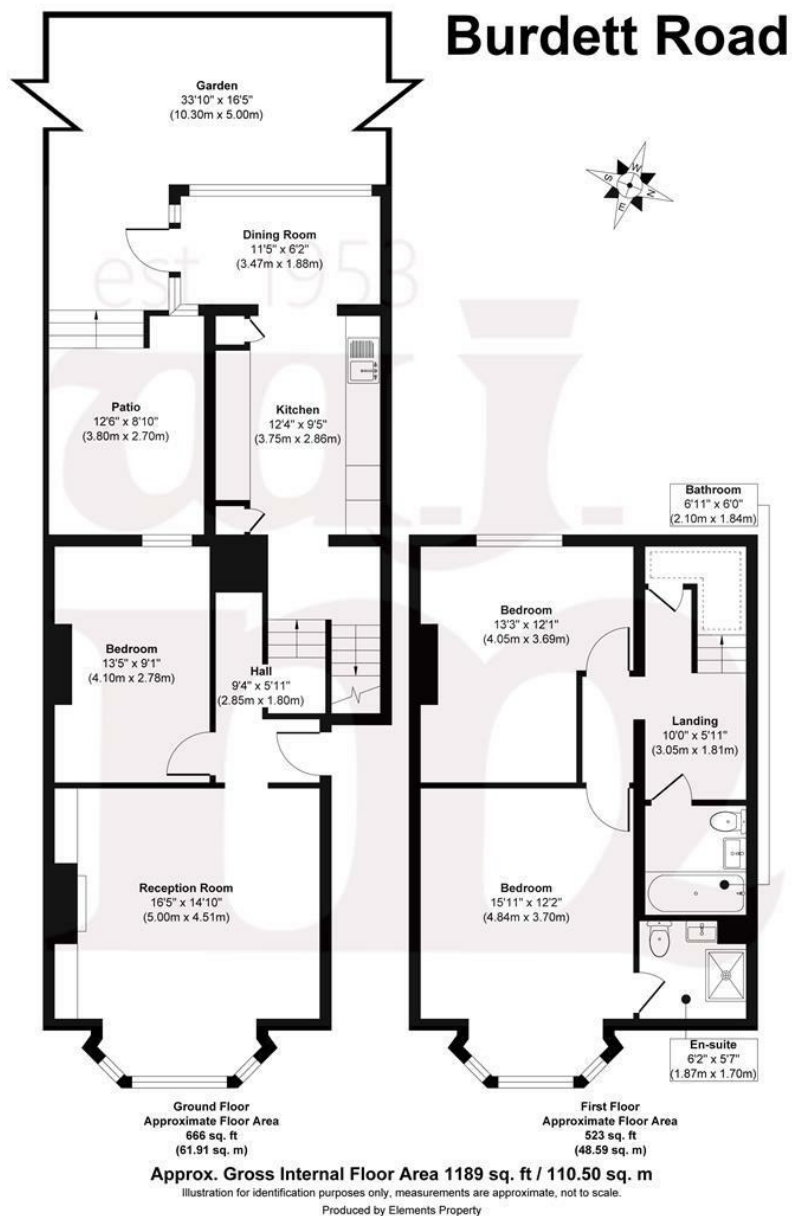
BURDETT ROAD, E14

OFFERS IN EXCESS OF £650,000

- Brickfield Gardens Conservation Area
- Kitchen/Diner
- Spacious Flexible Accommodation
- Private Rear Garden
- Residential Permit Parking
- Chain Free

wj.  
meade





WJ Meade are pleased to present this impressive three bedroom, two bathroom, split level apartment, part of a conversion of a grand Victorian terrace. Arranged over 1150 sq ft with voluminous ceiling height and sole access to a West facing rear garden. Retaining many beautiful period features, alongside modern upgrades, creating a wonderful home filled with character and charm. Located with great connections into Canary Wharf and the City, with surrounding canals and public green spaces, including Victoria Park, as well as transport links at both Mile End and Limehouse.

All sizes are approximate. The Agent has not tested any apparatus, equipment, fixtures and fittings, or services and so cannot verify that they are in working order or fit for the purpose. A buyer is advised to obtain verification from their Solicitors or Surveyor. Photographs are for illustration purposes only and may depict items, which are not for sale or included in the sale price. References to tenure of a property are based upon information supplied by the vendor. The agent has not had sight of the title documents, a buyer is advised to obtain verification from their solicitor. Money Laundering Regulations 2003: Intending purchasers will be asked to produce identification, documentation at a later stage and we would ask for your co-operation in order that there will be no delay in agreeing the sale.

These particulars are intended to give a fair description of the property only and are in no way guaranteed, nor do of any contract. They are issued on the express condition that all negotiations are conducted through W.J. Meade Estate Agents. All subject to contract and to being unsold.

Service charge ad hoc  
Ground rent £250  
114 years lease  
Council tax band C  
Current EPC Rating G  
Tenure: Leasehold

